

**#1 PRESCRIBED  
BRANDED TOPICAL  
TREATMENT FOR PLAQUE  
PSORIASIS IN ADULTS\***

**VTAMA**<sup>®</sup>  
(tapinarof) cream 1%

Not an  
actual  
patient

The most common adverse reactions (incidence  $\geq 1\%$ ) in subjects treated with VTAMA cream were folliculitis (red raised bumps around the hair pores), nasopharyngitis (pain or swelling in the nose and throat), contact dermatitis (skin rash or irritation, including itching and redness, peeling, burning, or stinging), headache, pruritus (itching), and influenza (flu).

For Important Safety Information, go to page 9 or click [HERE](#).

\*IQVIA National Prescription Audit (NPA) for the 3-month period ending 9/1/2023, reflecting estimates of real-world activity.  
All rights reserved.



Not an actual patient

## Discover a prescription cream that's once daily and steroid free

This brochure takes you through some VTAMA® (tapinarof) cream, 1% essentials. It can help you answer questions like:

- ▶ **What is VTAMA cream?**
- ▶ **What should I expect?**
- ▶ **How do I apply VTAMA cream?**

Then, if you'd like more information, please visit our website or give us a call at the toll-free number:

[www.VTAMA.com](http://www.VTAMA.com)

**1-8-DERMAVANT (1-833-762-8268)**

## Let's start with the basics

VTAMA cream (pronounced "Vee-TAM-uh") is an approved prescription medicine used on the skin (topical) to treat adults with mild, moderate, or severe plaque psoriasis.

## What is plaque psoriasis?

Plaque psoriasis is a chronic skin condition that causes patches of raised, inflamed, and red skin with silvery scales. In skin of color, plaques may be thicker, have more scales, and appear like darker areas of skin. It's caused by an imbalance in your immune system that disrupts the normal function of the cells in your skin.

VTAMA cream is proven to achieve clearer skin in adults with plaque psoriasis.

**VTAMA**<sup>®</sup>  
(tapinarof) cream 1%

Please see Brief Summary of Prescribing Information on page 8 or click [HERE](#).  
For Important Safety Information, go to page 9 or click [HERE](#).



# What is VTAMA cream?



**VTAMA cream is a topical treatment approved by the FDA for adults with plaque psoriasis**

**#1**

**Prescribed branded topical treatment for plaque psoriasis in adults\***

\*IQVIA National Prescription Audit (NPA) for the 3-month period ending 9/1/2023, reflecting estimates of real-world activity. All rights reserved.



## **INNOVATIVE**

VTAMA cream is an FDA-approved, once-daily, steroid-free topical treatment.



## **SAFE AND TOLERABLE**

VTAMA cream is safe and was well tolerated even in sensitive skin areas, like your face and neck, armpits, chest/breasts, groin, and genitals.\*

\*Do not use VTAMA cream in your eyes, mouth, or vagina.



## **RESULTS THAT LAST**

VTAMA cream helped adults achieve significantly clearer skin through 12 weeks over vehicle cream (a cream with no active ingredient), and patients achieving clear skin stayed clearer when off treatment for a median of ~4 months.

# What are the most common side effects of VTAMA cream?

The most common side effects of VTAMA cream observed in clinical studies were folliculitis (red raised bumps around the hair pores), nasopharyngitis (pain or swelling in the nose and throat), contact dermatitis (skin rash or irritation, including itching and redness, peeling, burning, or stinging), headache, pruritus (itching), and influenza (flu).

**VTAMA**  
(tapinarof) cream 1%

Please see Brief Summary of Prescribing Information on page 8 or click [HERE](#). For Important Safety Information, go to page 9 or click [HERE](#).



# How to use VTAMA cream

## Applying VTAMA cream

- Use VTAMA cream exactly as your doctor tells you to use it.
- Apply a thin layer of VTAMA cream only to your psoriasis skin lesions one (1) time a day. Avoid applying VTAMA cream to unaffected areas of your skin.
- Wash your hands after applying VTAMA cream unless you are using it to treat your hands.
- If someone else applies VTAMA cream for you, they should wash their hands after application.

## Where can I apply VTAMA cream?

VTAMA cream is for use on the skin (topical use) only. VTAMA cream can be used on sensitive skin, like your face and neck, armpits, chest/breast, groin and genitals.\*

\*Do not use VTAMA cream in your eyes, mouth, or vagina.

Not an actual patient

**You know  
what it's like  
to hide your skin  
under sleeves**

Please see Brief Summary of Prescribing Information on page 8 or click [HERE](#). For Important Safety Information, go to page 9 or click [HERE](#).



# Before and after

VTAMA cream delivered significantly clearer skin as early as week 4, reduced itch as early as week 2,<sup>†</sup> with continued improvement through week 12.

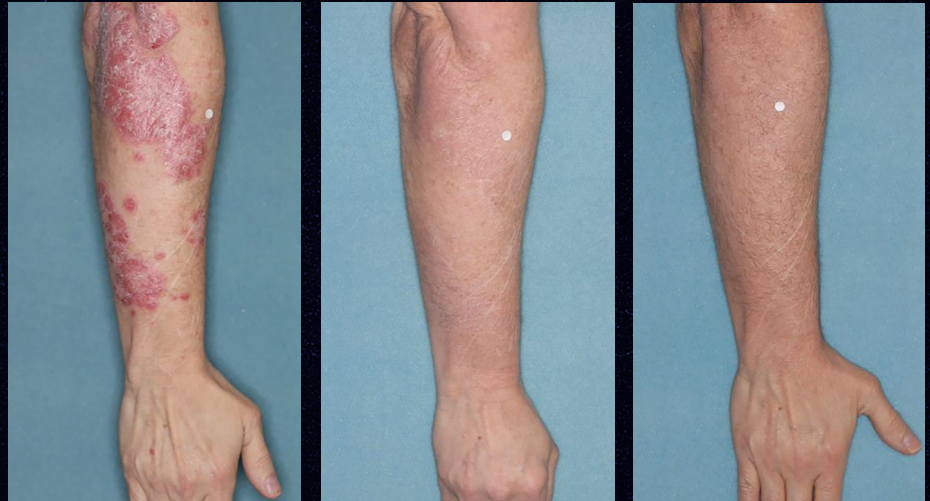
Here are some images of results patients in clinical studies achieved with VTAMA cream. Please remember that individual results may vary.

The most common side effects of VTAMA cream observed in clinical studies were folliculitis (red raised bumps around the hair pores), nasopharyngitis (pain or swelling in the nose and throat), contact dermatitis (skin rash or irritation, including itching and redness, peeling, burning, or stinging), headache, pruritus (itching), and influenza (flu).

\* The patient shown did not achieve the primary efficacy endpoint of Physician Global Assessment (PGA) response defined as PGA=0 (clear) or 1 (almost clear) and ≥2-grade improvement from baseline at week 12 in the PSOARING 2 Study.

<sup>†</sup> As measured by Peak Pruritus Numerical Rating Scale (PP-NRS) patient self-reporting scale.

Patient 1017-010 | 56-year-old female, arm

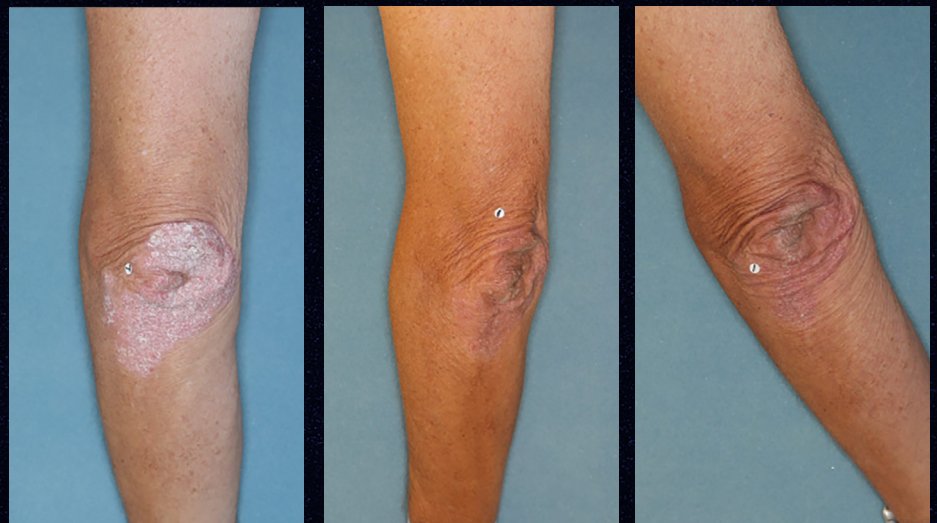


Baseline

Week 4

Week 12

Patient 2030-001\* | 67-year-old male, arm



Baseline

Week 8

Week 12



Not an actual patient

## Overwhelmingly positive responses from people like you

- Some topical skin treatments feel oily or greasy and may even stain your clothes.
- VTAMA cream is a cosmetically elegant, water-based cream. Patients said it absorbs quickly and won't leave your skin feeling greasy when you put it on. Our formula is designed to minimize skin irritation.
- You might also like to know that VTAMA cream does not contain any fragrance, petrolatum, PABA, parabens, or gluten.

**~90%**

**~90%** of patients said VTAMA cream is easy to apply, is non-greasy, and absorbs quickly

**84%**

**84%** of patients said they would recommend VTAMA cream to others if available

**~83%**

**~83%** of patients said they would use VTAMA cream again or continue to use it



Not actual patients

# Support and savings

## How much does VTAMA cream cost?

The cost of VTAMA cream will vary depending on several factors, including the type or level of insurance you have.

For more information on savings through MyVTAMA, head over to [www.VTAMA.com/savings-card](http://www.VTAMA.com/savings-card).

For further assistance, call 1-8-DERMAVANT (1-833-762-8268) Monday through Friday, 9:00 AM-6:00 PM ET (excluding holidays).

## What's MyVTAMA?

MyVTAMA is the patient support program from Dermavant, the company that makes VTAMA cream. It was created to give you support and assistance along your journey.



Scan or click  
to visit our  
website **for**  
**more savings**  
**information**

Please see Brief Summary of Prescribing Information on page 8 or click [HERE](#). For Important Safety Information, go to page 9 or click [HERE](#).

**VTAMA**  
(tapinarof) cream 1%



## IMPORTANT INFORMATION ABOUT VTAMA® (Vee-TAM-uh) (tapinarof) CREAM, 1%

### BRIEF SUMMARY

This summary contains important information about VTAMA cream. It is not meant to take the place of your doctor's instructions. Read this information carefully before you start using VTAMA cream. Ask your doctor or pharmacist if you do not understand any of this information or if you want to know more about VTAMA cream. For full Prescribing Information and Patient Information, please see the package insert.

### WHAT IS VTAMA CREAM?

VTAMA cream is a prescription medicine used on the skin (topical) to treat plaque psoriasis in adults. It is not known if VTAMA cream is safe and effective in children under 18 years of age.

**Do not use VTAMA cream** for a condition for which it was not prescribed. Do not give VTAMA cream to other people, even if they have the same symptoms you have. It may harm them.

**Important: VTAMA cream is for use on the skin (topical use) only.** Do not use VTAMA cream in your eyes, mouth, or vagina.

### WHAT SHOULD I TELL MY DOCTOR BEFORE USING VTAMA CREAM?

Before you use VTAMA cream, tell your doctor about all of your medical conditions, including if you:

- ▶ Are pregnant or plan to become pregnant. It is not known if VTAMA cream will harm your unborn baby; and/or
- ▶ Are breastfeeding or plan to breastfeed. It is not known if VTAMA cream passes into your breast milk. Talk to your doctor about the best way to feed your baby during treatment with VTAMA cream.

**Tell your doctor about all the medicines you take**, including prescription and over-the-counter medicines, vitamins, and herbal supplements.

### HOW SHOULD I USE VTAMA CREAM?

- ▶ Use VTAMA cream exactly as your doctor tells you to use it.
- ▶ Apply a thin layer of VTAMA cream only to your psoriasis skin lesions one (1) time a day. Avoid applying VTAMA cream to unaffected areas of your skin.
- ▶ Wash your hands after application unless VTAMA cream is for treatment of your hands.
- ▶ If someone else applies VTAMA cream for you, they should wash their hands after application.

### WHAT ARE THE POSSIBLE SIDE EFFECTS OF VTAMA CREAM?

The most common side effects include: folliculitis (red raised bumps around the hair pores), nasopharyngitis (pain or swelling in the nose and throat), contact dermatitis (skin rash or irritation, including itching and redness, peeling, burning, or stinging), headache, pruritus (itching), and influenza (flu).

These are not all the possible side effects of VTAMA cream. Call your doctor for medical advice about side effects.

You are encouraged to report negative side effects of prescription drugs to the FDA at [www.fda.gov/medwatch](http://www.fda.gov/medwatch) or call 1-800-FDA-1088.

### HOW SHOULD I STORE VTAMA CREAM?

- ▶ Store VTAMA cream at room temperature, between 68°F to 77°F (20°C to 25°C).
- ▶ Do not freeze VTAMA cream.
- ▶ Protect VTAMA cream from exposure to excessive heat.
- ▶ Keep VTAMA cream and all medicines out of the reach of children.

### WHAT ARE THE INGREDIENTS IN VTAMA CREAM?

**Active ingredient:** tapinarof **Inactive ingredients:** benzoic acid, butylated hydroxytoluene, citric acid monohydrate, diethylene glycol monoethyl ether, edetate disodium, emulsifying wax, medium-chain triglycerides, polyoxyl 2 stearyl ether, polyoxyl 20 stearyl ether, polysorbate 80, propylene glycol, purified water, and sodium citrate dihydrate.

VTAMA is a trademark of Dermavant Sciences, GmbH or its affiliates. Dermavant Sciences Inc., Long Beach, CA 90806 USA



## IMPORTANT SAFETY INFORMATION

**Indication:** VTAMA® (tapinarof) cream, 1% is an aryl hydrocarbon receptor agonist indicated for the topical treatment of plaque psoriasis in adults.

**Adverse Events:** The most common adverse reactions (incidence  $\geq$  1%) in subjects treated with VTAMA cream were folliculitis (red raised bumps around the hair pores), nasopharyngitis (pain or swelling in the nose and throat), contact dermatitis (skin rash or irritation, including itching and redness, peeling, burning, or stinging), headache, pruritus (itching), and influenza (flu).

You are encouraged to report negative side effects of prescription drugs to the FDA. Visit [www.fda.gov/medwatch](http://www.fda.gov/medwatch) or call 1-800-FDA-1088.



For more info on VTAMA cream,  
scan or click the above QR code  
or head to [www.VTAMA.com](http://www.VTAMA.com)